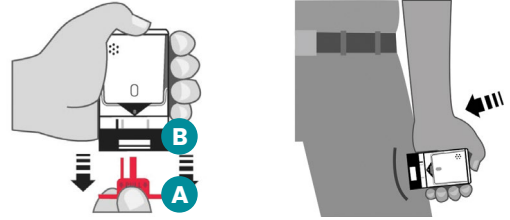


HOW TO USE EPINEPHRINE TO TREAT ANAPHYLAXIS (SERIOUS ALLERGIC REACTION)

There is one dose in each device. If a second dose is needed, use a second device.

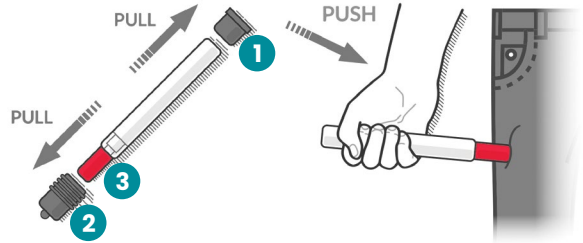
AUVI-Q™ (Epinephrine Injection, USP) Directions

1. Pull AUVI-Q up from outer case. This will automatically activate the voice instructions.
2. Pull off the red safety guard (labeled "A").
3. Place black end (labeled "B") against mid-outer thigh.
4. Press firmly and hold for 2 seconds.



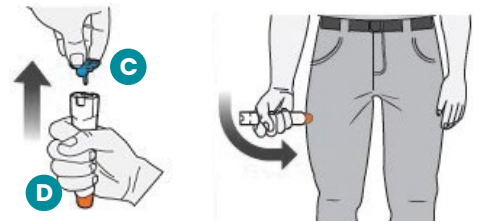
Generic Adrenaclick® (Epinephrine Injection, USP) Auto-Injector Directions

1. Remove the outer case.
2. Remove gray caps labeled "1" and "2".
3. Place red rounded tip (labeled "3") against mid-outer thigh.
4. Press down hard until needle enters thigh.
5. Hold in place for 10 seconds. Remove from thigh.



EpiPen® Auto-Injector or Generic Directions

1. Remove the EpiPen Auto-Injector from the clear carrier tube.
2. Remove the blue safety release (labeled "C") by pulling straight up without bending or twisting it.
3. Swing and firmly push orange tip (labeled "D") against mid-outer thigh until it "clicks".
4. Hold firmly in place for 3 seconds (count slowly 1, 2, 3).



Neffy® Epinephrine Nasal Spray Directions

1. Remove neffy from packaging. DO NOT TEST PUMP THE DEVICE.
2. Hold the device with your thumb on the bottom of the plunger and a finger on either side of the nozzle.
3. Insert the nozzle into a nostril until your fingers touch your nose. Keep nozzle straight into the nose pointed toward your forehead.
4. Press plunger up firmly until it snaps up and sprays liquid into the nostril.
5. If second dose needed, spray into same nostril.

