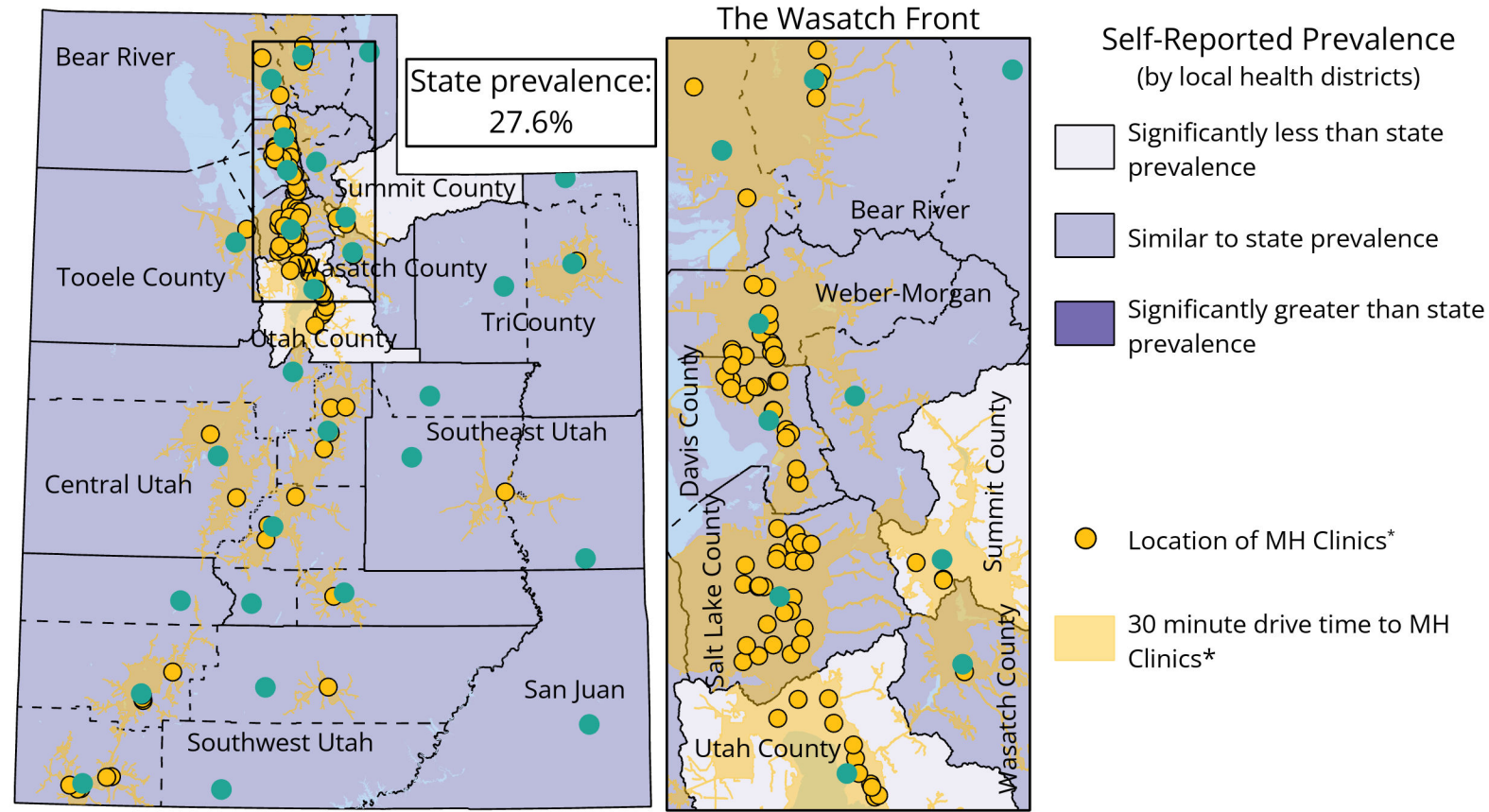
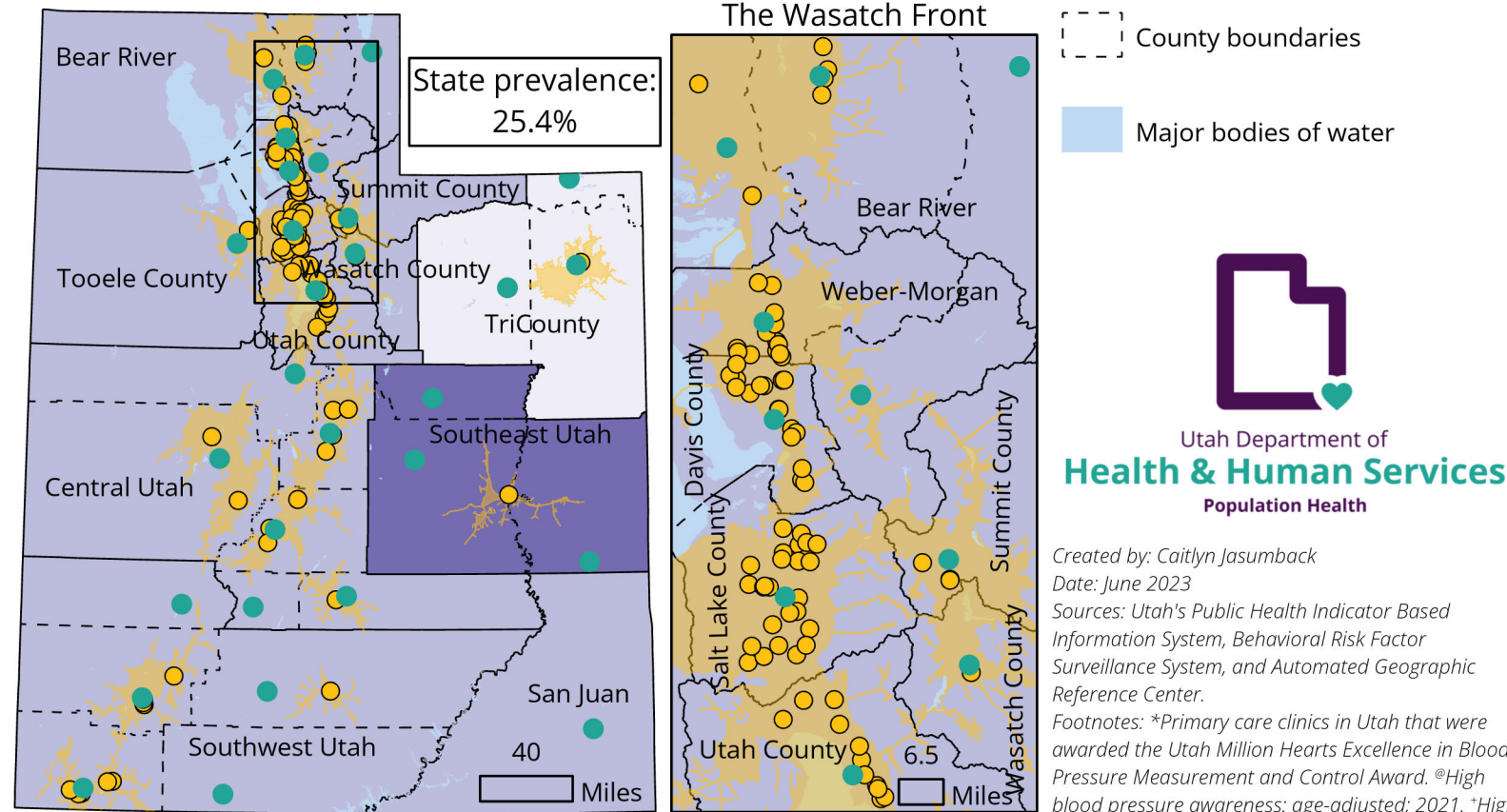


Evaluation of geographic access to MH clinics* in Utah local health districts with the heaviest burden of high blood pressure and cholesterol.

High blood pressure self-reported prevalence@



High blood cholesterol self-reported prevalence+



Created by: Caitlyn Jasumback
Date: June 2023
Sources: Utah's Public Health Indicator Based Information System, Behavioral Risk Factor Surveillance System, and Automated Geographic Reference Center.
Footnotes: *Primary care clinics in Utah that were awarded the Utah Million Hearts Excellence in Blood Pressure Measurement and Control Award. @High blood pressure awareness: age-adjusted; 2021. *High blood cholesterol awareness: age-adjusted; 2021.